



WSLP M-P

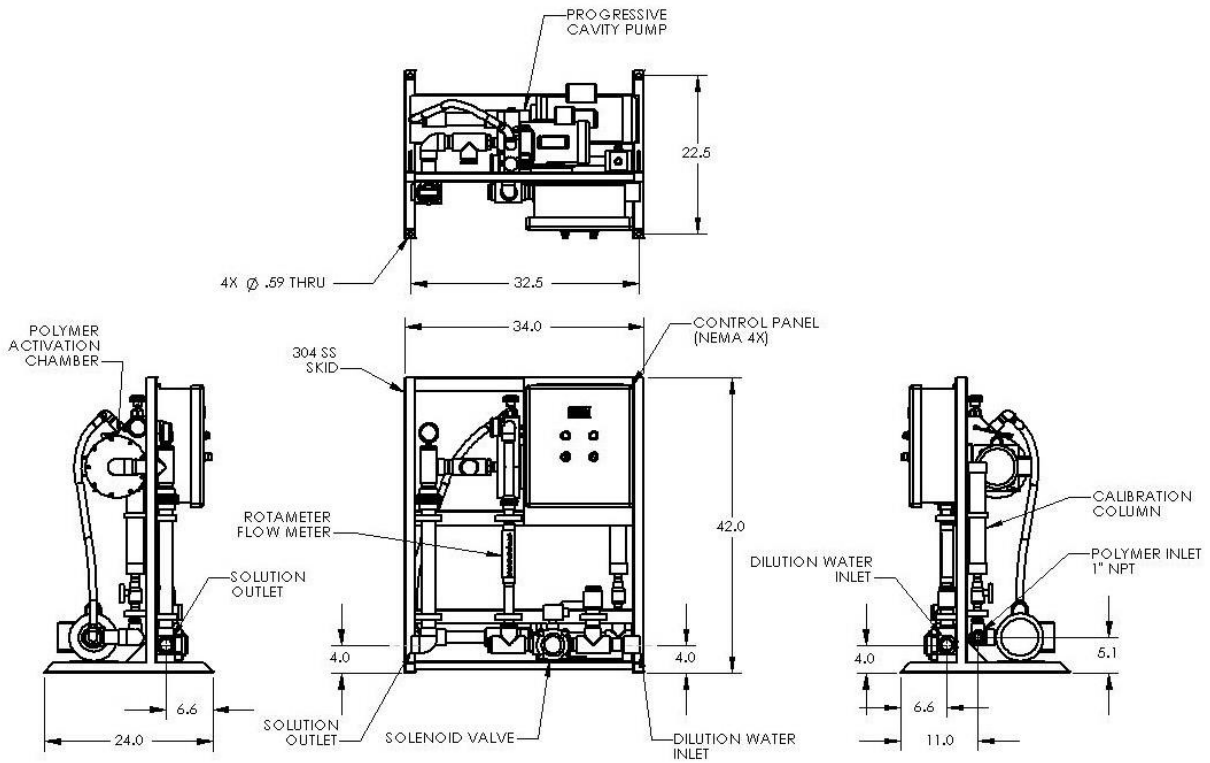


*Series WSLP M-P Series Shown
Secondary Dilution Option*

- **State-of-the-art Hydro-Mechanical Hybrid Blending Technology**
- **Progressive Cavity Pump** (gear & rotary lobe also available)
- **Rugged Stainless Steel Frame**
- **Open Accessibility to All Components**
- **Designed for Optional Add-On Equipment**

The WaterSolve M-P series is a hybrid polymer blending technology delivering the ultimate in performance and reliability.

- Operates non-mechanically with pressures as low as 30 psi
- Advanced variable speed mechanical polymer blending alleviates the reliance on water pressure for mixing energy
- Specially designed check valve improves reliability
- Exclusive mechanical seal flush improved reliability
- Clear mixing chamber for viewing mixing action



Build Your WSLP Model:

Series	Pump Selection	Water Range Selection	Control Series
M-P			

Series:

M	Hydro-Mechanical Mixing Chamber
----------	---------------------------------

Pump Section:

1P	0.05 to 1 GPH
2.5P	0.12 to 2.5 GPH
5.0P	0.25 to 5 GPH
10P	0.5 to 10 GPH
15P	0.75 to 15 GPH
25P	1.25 to 25 GPH
35P	1.75 to 35 GPH
50P	2.5 to 50 GPH
<i>Larger ranges available – consult factory.</i>	

Water Range Selection:

120	0.2 to 2 GPM
300	0.5 to 5 GPM
600	1 to 10 GPM
1200	2 to 20 GPM
1800	3 to 30 GPM
2400	4 to 40 GPM
6000	10 to 100 GPM
<i>"/2" Indicates Post Dilution and Doubles the Dilution Water Flow Rate (i.e. 2400/2 = 4 to 80 GPM Flow Range)</i>	
<i>Higher capacities available – consult factory</i>	

Control Series Selection:

	CONTROL SERIES					
	A	B	C	D	E	R
LOCAL ON/OFF	•	•	•	•	•	•
REMOTE ON/OFF (DRY CONTACT)	•	•	•	•	•	•
4-20mA POLYMER PUMP PACING		•	•	•	•	•
LCD DISPLAY OF PUMP RATE		•	•	•	•	•
LOW WATER PRESSURE ALARM			•	•	•	
LOW POLYMER FLOW ALARM				•	•	•
LOW WATER FLOW ALARM						•
4-20mA OUTPUT PUMP RATE					•	•
AUTO CONCENTRATION CONTROL						•

An "X" following the control series indicates a modification to that control series.